

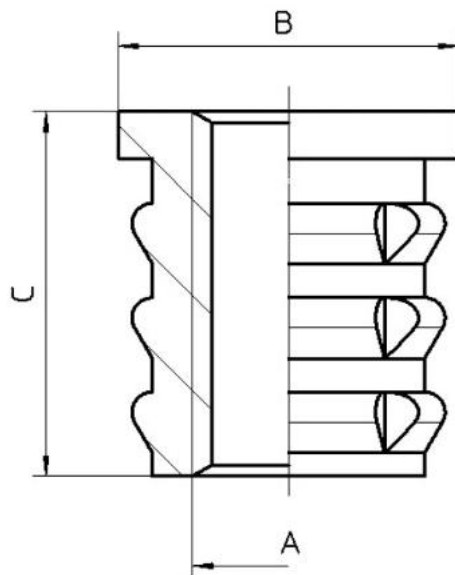


Non-Magnetic Inserts

Threaded Insert with Rounded Fin and Flute

PART SPECIFICATIONS

Material: Non-Magnetic Brass



Part Number	Inside Thread A mm	Shoulder Diameter B mm	Length C mm
PPI-520-1158	4-40UNC	4.75	4.6
PPI-510-0501	4-40UNC	4.75	5.6
PPI-510-0502	6-32UNC	5.54	6.3
PPI-510-0503	.250-20UNC	9.53	12.7
PPI-510-0505	10-32UNC	7.14	9.5
PPI-510-0676	M3x0.5	4.75	5.6
PPI-510-0677	M3.5x0.6	5.54	6.3
PPI-510-0678	M5	7.14	9.5
PPI-510-0679	M6	9.53	12.7

Please note that the contents of this document are subject to change at any time at PPI's sole discretion. The most up-to-date version of this document is available at www.passiveplus.com.