

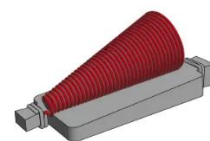


# Broadband Conical Surface Mount Inductor

## PPI-100SMxx Series

## PART SPECIFICATIONS

Part Number	L $\mu$ H @ 10 MHz	DCR $\Omega$ NOM	Current Rating mA DC	Upper Frequency Limit GHz	Turns	Wire Size AWG
POWDERED IRON CORE						
PPI-100SMNL-0R20-655-G6	0.20	0.10	655	40	19	38
PPI-100SMNR-0R20-655-G6						
PPI-100SMNL-0R44-452-G6	0.44	0.21	452	40	25	40
PPI-100SMNR-0R44-452-G6						
PPI-100SMNL-0R58-302-G6	0.58	0.47	302	40	31	42
PPI-100SMNR-0R58-302-G6						
PPI-100SMNL-1R00-241-G6	1.00	0.74	241	40	39	44
PPI-100SMNR-1R00-241-G6						
PPI-100SMNL-1R54-140-G6	1.54	0.74	241	40	49	47
PPI-100SMNR-1R54-140-G6						

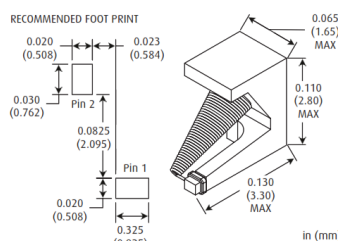
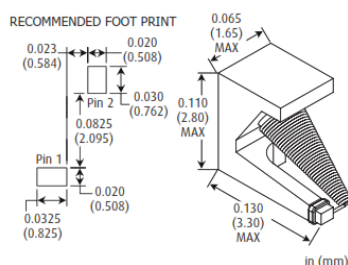
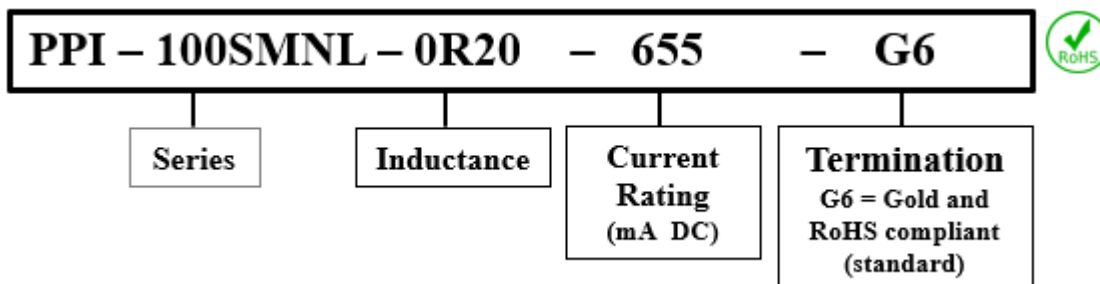


## PRODUCT FEATURES

Operating Temperature Range	-55°C to + 125°C	Current Rating	Based on a 35°C temperature rise at an ambient temperature of 90°C
Wire Type	Copper	Weight MAX	0.0135 grams

- All non-tolerance and electrical data are reference only and based on nominal data
- Terminal is elongated to allow for soldering close to the tip of the coil
- Recommended that component is epoxied to substrate before reflow soldering
- Materials are fungus-inert to meet method 508 of MIL-STD-810H
- Meets a TML (Total Mass Loss) requirement of 1.0% maximum when tested in accordance with ASTM E595; this calculation does not include WVR (Water Vapor Recovered)
- Custom designs are available. Please contact PPI.

## PART NUMBER



Please note that the contents of this document are subject to change at any time at PPI's sole discretion. The most up-to-date version of this document is available at [www.passiveplus.com](http://www.passiveplus.com)



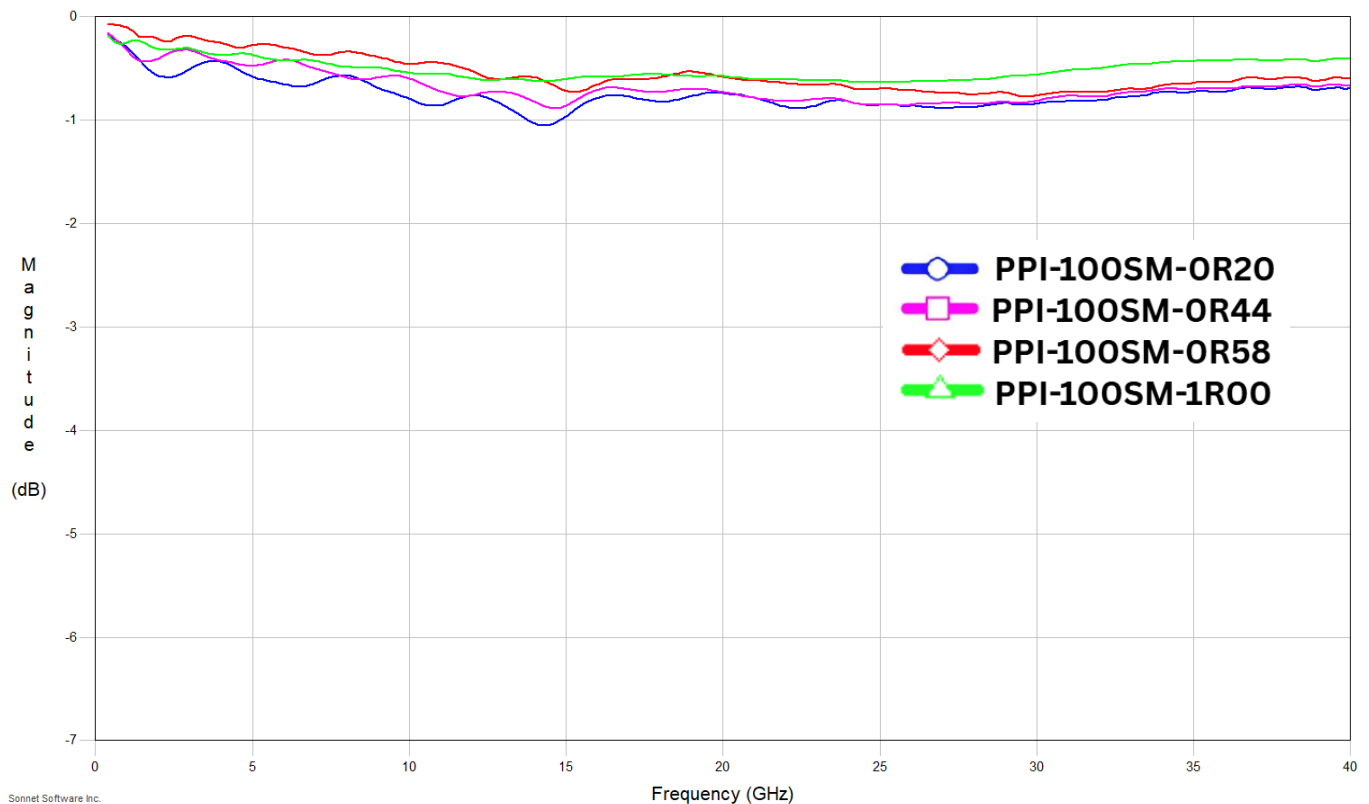
# Broadband Conical Surface Mount Inductor

**PPI-100SMxx Series**



## INSERTION LOSS

Inductors are mounted in two-port shunt configuration on 5 mil thick Alumina substrate.



Sonnet Software Inc.