



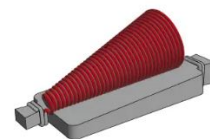
# Broadband Conical Surface Mount Inductor

PPI-070SM Series

## PART SPECIFICATIONS

Part Number	L $\mu$ H @ 10 MHz	DCR $\Omega$ NOM	Current Rating mA DC	Upper Frequency Limit GHz	Turns	Wire Size AWG
POWDERED IRON CORE						
PPI-070SM-0R165-625-G6	0.165	0.080	625	50	15	38
PPI-070SM-0R265-425-G6	0.265	0.170	425	50	20	40
PPI-070SM-0R390-340-G6	0.390	0.280	340	50	25	42
PPI-070SM-0R550-235-G6	0.550	0.600	235	50	30	44
PPI-070SM-0R700-190-G6	0.700	0.820	190	50	34	45
PPI-070SM-0R800-175-G6	0.800	1.00	175	50	38	46
PPI-070SM-1R050-150-G6	1.050	1.50	150	50	43	47

\*based on substrate



## PRODUCT FEATURES

Operating Temperature Range	-55°C to + 125°C	Current Rating	Based on a 35°C temperature rise at an ambient temperature of 90°C
Wire Type	Copper	Weight MAX	0.010 grams

- All non-tolerance and electrical data are reference only and based on nominal data
- Terminal is elongated to allow for soldering close to the tip of the coil
- Recommended that component is epoxied to substrate before reflow soldering
- Materials are fungus-inert to meet method 508 of MIL-STD-810H
- Meets a TML (Total Mass Loss) requirement of 1.0% maximum when tested in accordance with ASTM E595; this calculation does not include WVR (Water Vapor Recovered)
- Custom designs are available. Please contact PPI.

## PART NUMBER

PPI – 070SM – 0R265 – 425 – G6



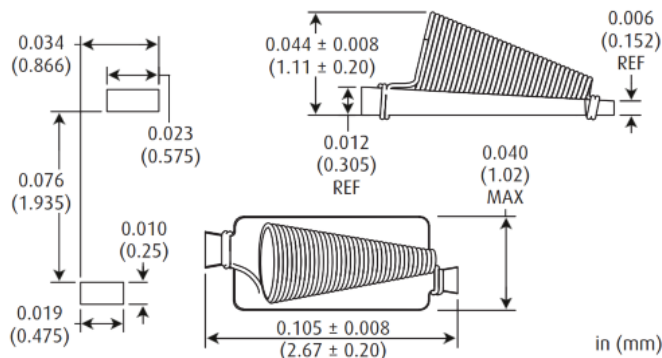
Series

Inductance

Current  
Rating  
(mA DC)

Termination  
G6 = Gold and  
RoHS compliant  
(standard)

### RECOMMENDED FOOT PRINT



Please note that the contents of this document are subject to change at any time at PPI's sole discretion. The most up-to-date version of this document is available at [www.passiveplus.com](http://www.passiveplus.com)



Broadband Conical  
Surface Mount Inductor  
**PPI-070SM Series**



## INSERTION LOSS

