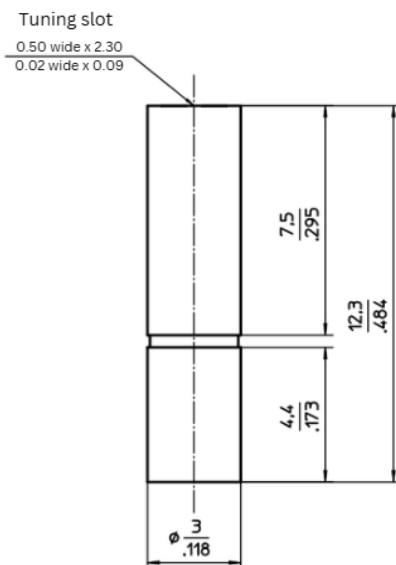


PART SPECIFICATIONS

TUNING TORQUE	0.14 - 1.4 in.oz
STOP TORQUE	max 2.1 in.oz
ROTATIONAL LIFE	≥ 75 cycles, IEC 418
VIBRATION	60 g / 10-2000Hz
SHOCK	1500g / 0.5ms
OPERATING TEMPERATURE	-65°C....+125°C
ADJUSTMENT ACCURACY	≤ 1 x 10⁻³ of adjusted value
CONTACT RESISTANCE	< 0.001Ω
DIELECTRIC	Zirconia

Part Number	Cmin (pF)	Cmax (pF)	Test Voltage (VDC)	Q-Factor (@200MHz)	IR (MΩ)	TC (ppm/°C)	Dim. A (mm)	Dim. B (mm)	Weight (g)
PPI-62-0332-00019-901	1.2	19.0	1000	> 2000	>10 ⁶	350 ± 75	---	---	0.47



Dimensions are in $\frac{\text{mm}}{\text{inches}}$