

Product Features

- Low Cost Applications
- Low Temperature Drift
- Designed for reflow soldering
- Low Magnetics
- Surface Mount Design
- Half Turn Adjustment
- Tape & Reel Packaging
- RoHS Compliant

Product Applications

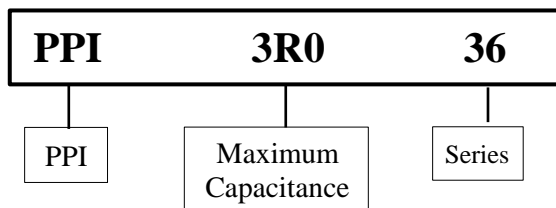
- NMR/ MRI Applications/Pre-Amplifiers
- Commercial Instrumentation
- RFID
- Tunable Filter Circuits

Specifications

- Capacitance Range: 1.5pF to 30pF
- DC Working Voltage: 100V
- DC Withstanding Voltage: 220V

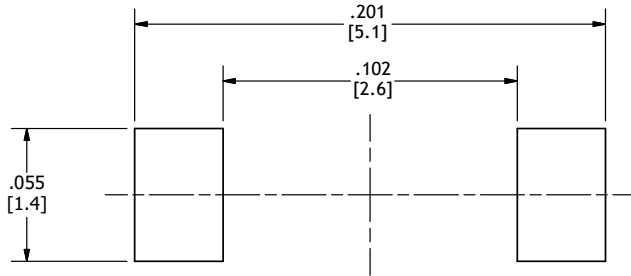


Part Numbering



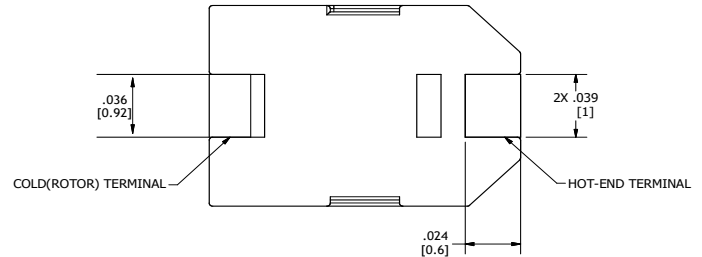
Part Number	PPI3R036	PPI6R036	PPI10036	PPI20036	PPI30036	
Capacitance (pF)	Minimum	1.5	2.0	3.0	5.8	8.0
	Maximum	3.0	6.0	10.0	20.0	30.0
Marking Color	Black	Blue	Ivory	Pink	Green	
DC Working Voltage	100	100	100	100	100	
DC Withstanding Voltage	220	220	220	220	220	
Temperature Coefficient (ppm/°C)	0 ± 300	0 ± 200	750 ± 400	1300 ± 400	1300 ± 400	
Q (min.) at 1 MHz	300	500	600	250	250	
Self Resonant Frequency at Maximum Rated Capacitance	1.4 GHz	1.07 GHz	0.86 GHz	0.59 GHz	0.46 GHz	
Insulation Resistance	10 ⁴ megaohms					
Operating Temperature	-25°C to +85°C					
Torque	15 to 72 gf.cm max. 0.21 to 1.0 in-oz max.					
Packaging	All parts furnished on 12mm tape and reel; 1,000 pcs per reel					

Land Pattern Dimensions (inches/mm)

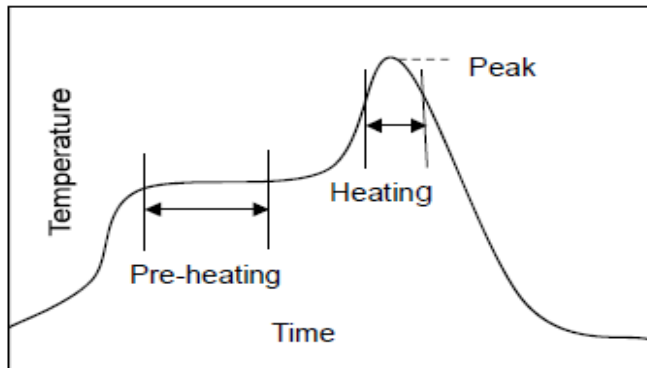


SUGGESTED FOOTPRINT
SOLDER PASTE THICKNESS OF 0.15 [mm] RECOMMENDED

Dimensions (inches/mm)

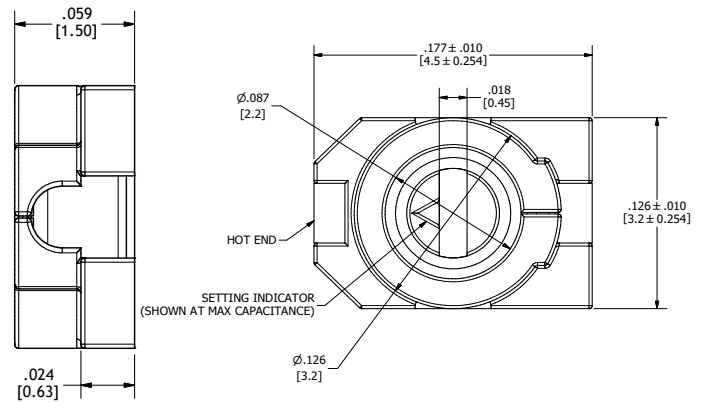


Suggested Soldering Profile



Stage	SAC305 Solder	Eutectic Solder
Pre-Heating	Temp: 150°C - 180°C Time: 60 - 120 Seconds	Temp: 120°C - 150°C Time: 60 - 120 Seconds
Heating	Temp: 220°C Min Time: 30 - 60 Seconds	Temp: 183°C Min Time: 30 - 60 Seconds
Peak Heat	Temp: 265°C Time: 3 Seconds Max	Temp: 265°C Time: 3 Seconds Max
Reflow Cycles	2 Times Max	2 Times Max
Soldering Iron		
Spec	Temperature: 400°C Max Time: 3 Seconds Max	

While PPI makes every effort to provide up to date and complete industry standard information, individual reflow equipment and applications vary. No guarantee is given that the suggested profile is suitable for any application or use.



≠ Tape & Reel Specifications

Series	Measurement Unit	W	P0	P1	T	F	Minimum Qty per Reel	Tape Material
36	in.	0.472	0.157	0.315	0.012	0.217	1000	Plastic
	mm	12.0	4.0	8.0	0.3	5.5		

A_0K_0

- Determined by component size. Typical clearance between the cavity and the component is: .50 (.002) min to .65 (.026) max for 12mm tape.
- The component cannot rotate more than 20° within the determined cavity.

